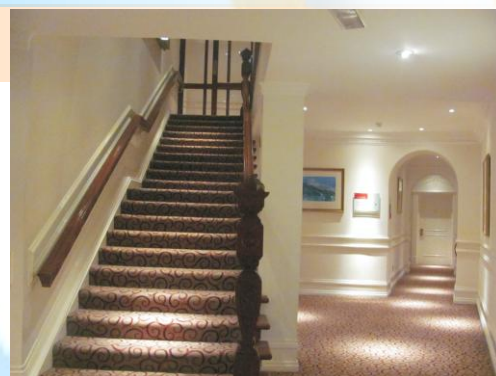


# PAR20 with E26/E27 base



**SPD 19A**

Φ63mm, Height 85mm  
Net weight: 0.29 lbs



**6.5W SPD 19A = 45W Halogen lighting**

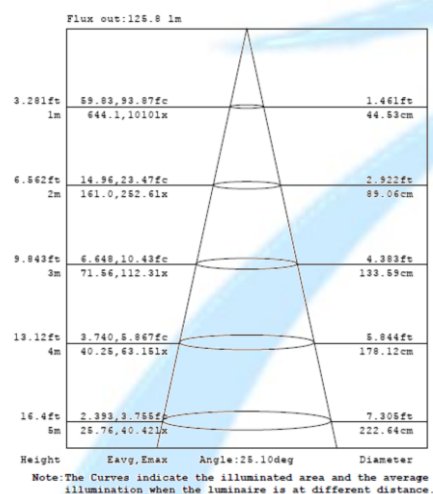
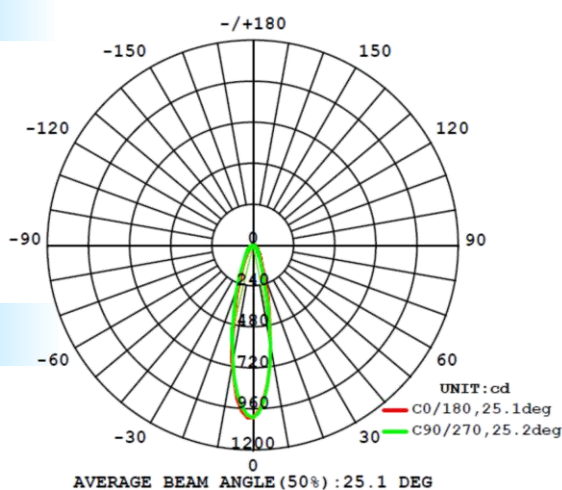
- 86% energy savings
- 1400% longer in life

## Applications

- Dancing stage
- Theater
- Cinema
- Clubs
- Hotel lobby

## Features

- No screw design
- Dimmable
- High efficacy

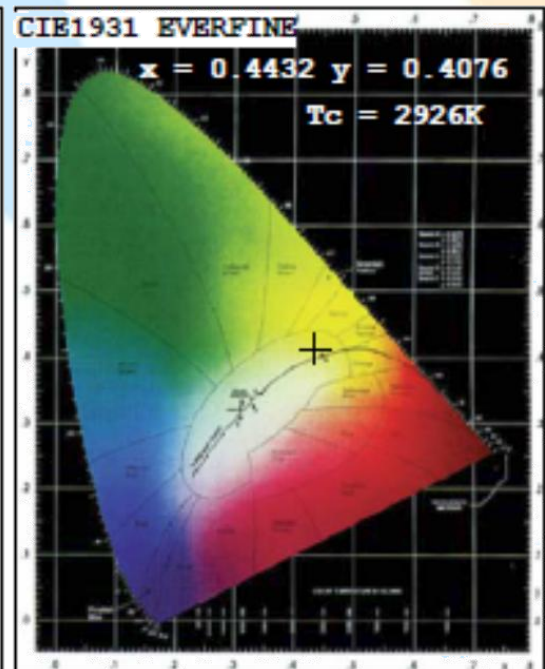
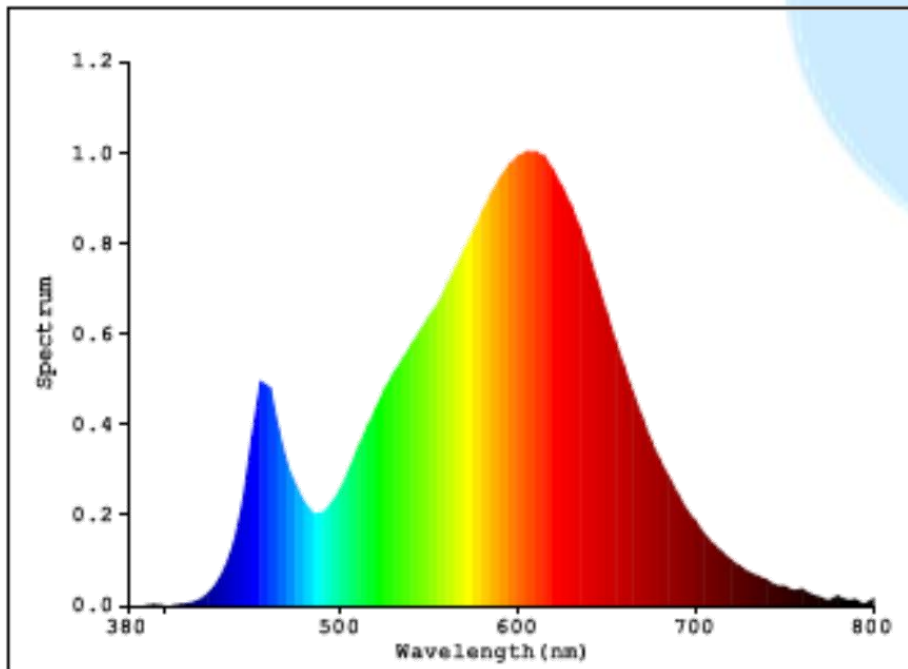


## Performance Parameters

PAR20	Light color type	Color temperature Min	Color temperature Max	Lumen(Cree)	Color Rendering Index	Input Volt	Power	PF	Efficiency	Ambient Temperature	Lifespan*	Wattage equivalent	Beam angles
SPD19A Non-Dim E26/E27	Cool White	5000K	6000K	470LM	>70	230V AC	6.5W	>0.9	>70LM/W	-20°C~40°C	8Years	45W	15°,24°,38°
	Natural White	3800K	4500K	440LM	>75	230V AC	6.5W	>0.9	>65LM/W	-20°C~40°C	8Years	45W	15°,24°,38°
	Warm White	2700K	3000K	395LM	>80	230V AC	6.5W	>0.9	>60LM/W	-20°C~40°C	8Years	45W	15°,24°,38°
SPD19A Dim E26/E27	Cool White	5000K	6000K	490LM	>70	120/230V AC	6.5W	>0.9	>75LM/W	-20°C~40°C	8Years	45W	15°,24°,38°
	Natural White	3800K	4500K	455LM	>75	120/230V AC	6.5W	>0.9	>70LM/W	-20°C~40°C	8Years	45W	15°,24°,38°
	Warm White	2700K	3000K	410LM	>80	120/230V AC	6.5W	>0.9	>60LM/W	-20°C~40°C	8Years	45W	15°,24°,38°

\* The lifespan is defined by average 6 working hours daily( 7days per week).

# SPD19A for PAR20 with E26/E27 base - Light Source Test Report (XBD)



## Color Parameters:

Chromaticity Coordinate:  $x=0.4432$   $y=0.4076$   $u'=0.2531$   $v'=0.5237$   
 $T_c=2926K$  Dominant WL:  $L_d=582.9nm$  Purity=55.4% Centroid WL: 593.0nm  
 Ratio: R=25.2% G=72.6% B=2.3% Peak WL:  $L_p=605.0nm$  HWL: 133.3nm  
 Render Index:  $R_a=82.8$

R1 =81	R2 =91	R3 =97	R4 =79	R5 =80	R6 =88	R7 =84	
R8 =62	R9 =14	R10=78	R11=76	R12=66	R13=84	R14=99	R15=75

## Photo Parameters:

Flux: 394.73 lm Fe: 1.2171 W Efficacy: 64.87 lm/W  
 LEVEL: WHITE:OUT

## Electrical Parameters:

Luminaire: U=119.4V I=0.05961A P=6.085W PF=0.8550

### Instrument Status:

Scan Range: 380.0nm-800.0nm Interval: 5.0nm[0]  
 REF=14069 (R=4)  $\%=-0.244\%$

$I_p=1621$  (G=3, D=52)  
 PMT: 26.9 centigrade [27.0]